

Submitted by: Chairman of the Assembly at the
Request of the Mayor
Prepared by: Anchorage Water & Wastewater Utility
For reading: May 11, 2004

CLERK'S OFFICE

APPROVED

Date: 6-22-04 **ANCHORAGE, ALASKA**
AR No. 2004- 123

**A RESOLUTION OF THE MUNICIPALITY OF ANCHORAGE, ALASKA, APPROVING
THE TIMBERLANE-KLATT WATER EXTENSIONS AND PROVIDING FOR
ASSESSMENT OF BENEFITED PROPERTIES AT TIME OF SERVICE
CONNECTION.**

WHEREAS, Alaska State Statute 42.05.385 and AMC 19.90 mandate that when a water line extension will create, or has the potential of creating, any charge or assessment against the adjacent property, the water line extension may not be constructed unless the legislative body of each municipality through which the extension passes has approved the extension.

WHEREAS, the Anchorage Water & Wastewater Utility (AWWU) plans to construct a 12-inch water main in Timberlane Drive between the Old Klatt and West Klatt Roadways. This water extension is part of a larger water project recommended in a draft update to the Utility's Water Master Plan. Also, with the pending reconstruction of Timberland Drive by the Municipal Project Management & Engineering Department (PM&E), the Utility intends to coordinate and proceed with the portion of the water main project to be located within the roadway project limits.

WHEREAS, the extension of the water line will specially benefit and provide water service to three (3) properties previously not benefited, and in doing so will create potential assessments against them.

THE ANCHORAGE ASSEMBLY RESOLVES:

SECTION 1. It is in the best interest of the community that said water main improvement proceed.

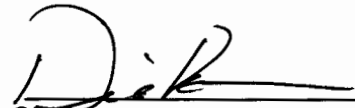
SECTION 2. AWWU shall keep an accurate account of all costs of the water main improvements.

SECTION 3. After the water main improvements have been completed and the costs of the water line approved, the Mayor shall cause the computation of all applicable assessment charges.

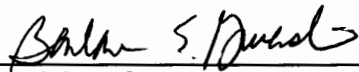
1 **SECTION 4.** At such time as the property cited on the attached assessment roll
2 connects to the water main, the respective pro-rata assessment for the water line shall
3 be levied in accordance with Municipal Codes and the AWWU Water Utility Tariff in
4 effect at the time.

5
6 **SECTION 5.** A special assessment Collection Charge, as authorized in Rules
7 Section 13.4 and 15.1 of the Water Utility Tariff, in effect at the time the assessment is
8 levied, will be charged to those properties identified in this resolution.
9

10
11 **PASSED AND APPROVED** by the Anchorage Assembly this 22nd day of
12 June, 2004.
13

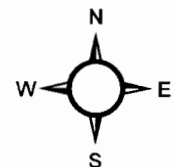
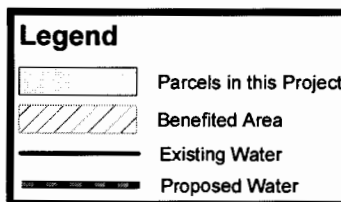
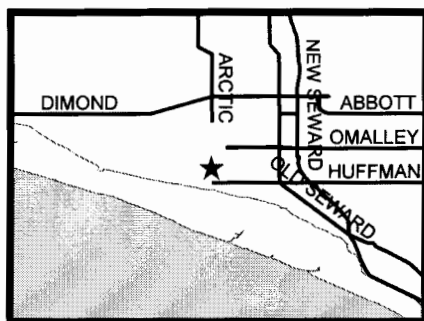
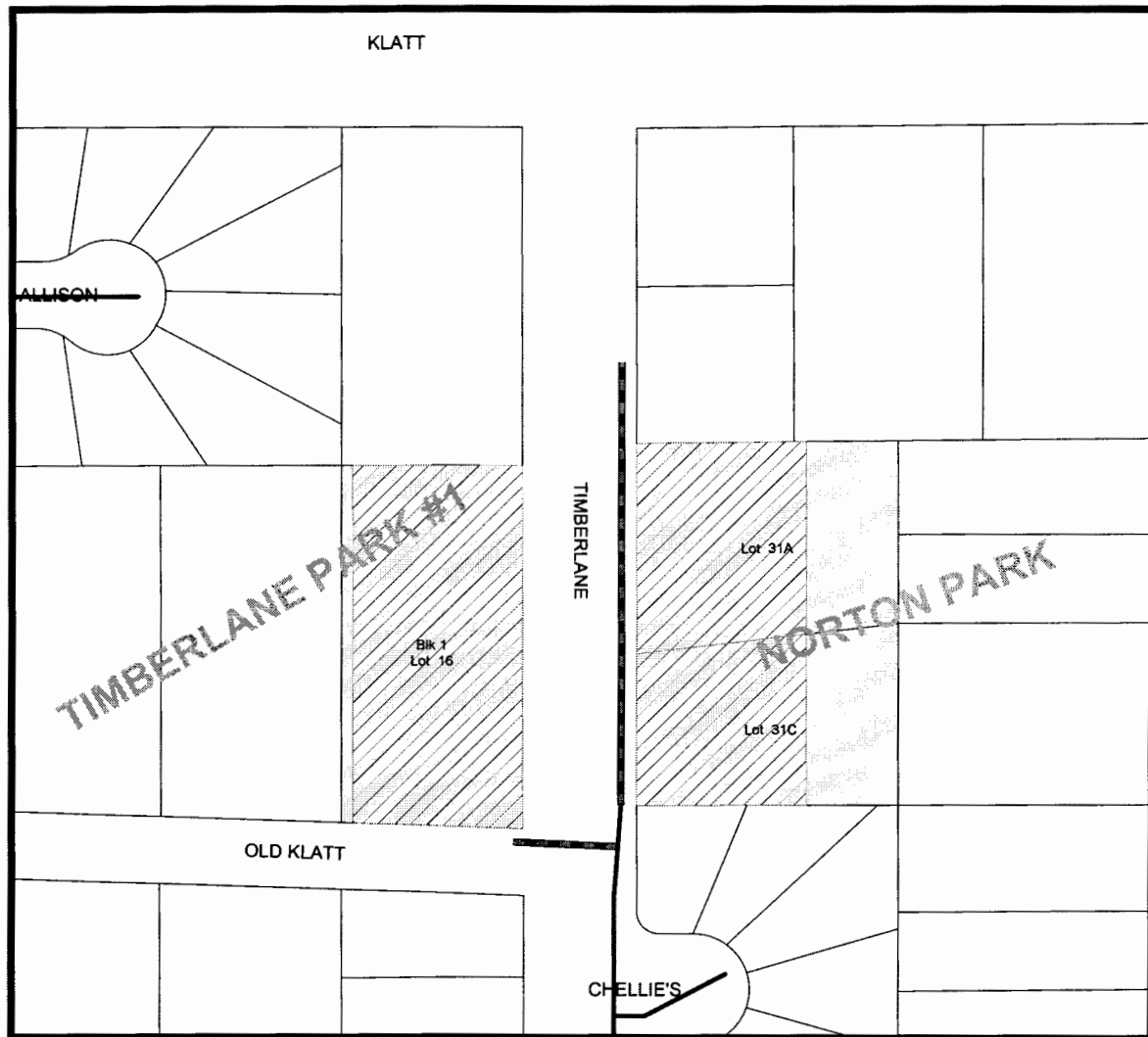
14
15
16
17
18
19
20
21
22
23

Chairman

ATTEST:


Municipal Clerk



Anchorage Water & Wastewater Utility **Timberlane-Klatt Water Upgrade 1759**



TIMBERLANE-KLATT WATER UPGRADE
Capital Improvement Project - Water
Assessment Roll
AMS 1759

Interest Rate: 0%

Item	Tax Code	Legal Description	Total Area	Assessed Area	Rate per Sq. Ft.	Mainline Charge	Water Principal	Owner 1
1	016-151-51-000	NORTON PARK LT 31A	41,426	27,602	\$1.13	\$31,190.26	\$31,190.26	WHEELER FAMILY REVOCABLE TRUST
2	016-151-52-000	NORTON PARK LT 31C	35,203	22,157	\$1.13	\$25,037.41	\$25,037.41	SWANK DANA L GLENN D
3	019-142-09-000	TIMBERLANE PARK #1 BLK 1 LT 16	52,708	49,367	\$1.13	\$55,784.71	\$55,784.71	MATTOON TIMOTHY G & LINDA L
Total							\$112,012.38	

MUNICIPALITY OF ANCHORAGE

ASSEMBLY MEMORANDUM

No. AM 398 -2004

Meeting Date: May 11, 2004

1 **From:** Mayor

2
3 **Subject:** Approval of the Timberlane-Klatt Water Upgrade and Providing for
4 Assessment of Benefiting Properties at Time of Service Connection

5
6 AMC 19.90 and A.S. 42.05.385 require the Assembly's approval to construct a main
7 extension where the extension will create any charges or assessments against the
8 adjacent properties. A public hearing is required prior to Assembly action.

9
10 The Anchorage Water & Wastewater Utility (AWWU or Utility) plans to construct a
11 12-inch water main in Timberlane Drive between the Old Klatt and West Klatt
12 Roadways. This water extension is part of a larger water project recommended in a
13 draft update to the Utility's Water Master Plan. Also, with the pending reconstruction
14 of Timberlane Drive by the Municipal Project Management & Engineering
15 Department (PM&E), the Utility intends to coordinate and proceed with the portion of
16 the water main project to be located within the roadway project limits. In doing so,
17 the construction of this water main extension will make water service available to
18 three (3) parcels.

19
20 Initially the costs of the water main extension will be borne by AWWU. When these
21 newly benefited and previously unassessed parcels connect to the water main,
22 AWWU shall recover a portion of the costs through the Levy Upon Connection
23 assessment procedures as authorized by the current Municipal Codes and Utility
24 Water Tariff.

25
26 The properties benefiting from the proposed construction are identified on the
27 assessment roll which is made part of the resolution carried by this memorandum.
28 As these properties seek connection, the parcels' pro-rated share of assessable
29 water main costs will be presented to the Assembly for levy confirmation and
30 approval.

31
32 The passage of this resolution will have no fiscal impact on Municipal owned parcels.

33
34 Prepared by: Mark Premo, P.E., General Manager, AWWU
35 Concur: Denis C. LeBlanc, Municipal Manager
36 Respectfully submitted: Mark Begich, Mayor

Content Information**Content ID :** 001787**Type:** AM_OtherServices - Other Services Memorandum

Approval of the Timberlane-Klatt Water Upgrade and Providing for

Title: Assessment of Benefiting Properties at Time of Service
Connection**Author:** gibsonam**Initiating Dept:** AWWU**Date Prepared:** 4/30/04 1:21 PM**Director Name:** Mark Premo**Assembly Meeting**
Date MM/DD/YY: 05/11/04**Public Hearing Date**
MM/DD/YY: 06/08/04**Workflow History**

<u>Workflow Name</u>	<u>Action Date</u>	<u>Action</u>	<u>User</u>	<u>Security Group</u>	<u>Content ID</u>
OtherServicesAMWorkflow	4/30/04 1:22 PM	Checkin	gibsonam	Public	001787
AWWU_SubWorkflow	4/30/04 1:34 PM	Approve	premomc	Public	001787
MuniManager_SubWorkflow	5/3/04 7:52 AM	Approve	leblancdc	Public	001787
MuniMgrCoord_SubWorkflow	5/3/04 11:34 AM	Approve	katkusja	Public	001787

CONSENT AGENDA – INTRODUCTION

2004 MAY -3 PM 3:50
CLERK OF COURT
M.D.A.